

CONTENTS:

Principal's Report	2
Voice Research W/Shop	4
Science Fair	5
Auskick Report	6
T.L.C. Logo Comp.	7
Arts on Tour	8
Rock Challenge	9
The Great Muffin Off	10
Science and Engineering Challenge	11
Little Red Hen	12
Blind Courage	13
School Assoc. News	14
General Information	15



CHESS CLUB



Principal's Report...

Dear Parents, Students and Community Members,

Welcome to Term 3 – a fantastic start has been made by all and a sense of real energy and enthusiasm exists at our school. Mr Stonehouse, Mr Green and Mr Pickett [filling in for Miss Coleman] have returned to the fray and I wish them well along with the rest of the staff for what will be a hectic but exciting term.

The 2010 National Assessment Program – Literacy & Numeracy [NAPLAN] results have recently been returned to the school and I am really proud to share the collective outcomes. The table in my report highlights two data sets:

NAPLAN Summary Report 2010	Grade	At or above National Minimum Standard			Average 2 year gain 2008-10		
		St Marys DHS %	Similar School %	Tasmania %	St Marys DHS	Similar School	Tasmania
GRADE 3	Reading	91	89	94	-	-	-
	Writing	91	96	97	-	-	-
	Spelling	96	92	90	-	-	-
	Grammar	74	85	92	-	-	-
	Numeracy	96	94	95	-	-	-
GRADE 5	Reading	90	82	91	74	79	83
	Writing	90	86	93	76	56	59
	Spelling	80	79	90	102	83	82
	Grammar	90	83	90	111	82	86
	Numeracy	85	86	93	88	78	79
GRADE 7	Reading	83	90	94	27	62	65
	Writing	86	85	89	37	35	39
	Spelling	81	86	91	62	57	57
	Grammar	72	82	89	25	31	34
	Numeracy	91	92	94	73	63	66
GRADE 9	Reading	86	84	90	48	33	36
	Writing	73	78	83	29	27	34
	Spelling	66	79	87	26	35	39
	Grammar	86	82	89	55	38	44
	Numeracy	91	88	93	40	38	38

The percentage of our Year 3, 5, 7 & 9 students who achieved the National Minimum Standard [in addition to a comparison to similar schools and other Tasmanian schools]. The second data set is “the Average Two Year Gain” – this allows the school to measure the gains the school has made over the last two years. For example we can now compare how our Grade 3’s from 2008 are performing as Grade 5’s. This particular aspect of the data is based on our students who were enrolled at the school in both years.

It is highly evident that the primary literacy initiative – Raising the Bar, Closing the Gap is making a significant difference for our students. Well done to our primary team and resource teachers for the

sustained commitment to our literacy initiatives. I would also commend our students for their participation – all primary students sat the “tests” and 2 secondary students had legitimate reasons to be absent in the assessment week.

For parents with students in Years 3, 5, 7 & 9 NAPLAN results are included with the Newsletter in addition to an explanatory pamphlet. Please do not hesitate to contact me or the relevant Senior Staff member should further explanation be required.

Our primary redevelopment is nearing completion with two new Multipurpose Rooms being finished off at the moment to complement the original primary site. These rooms are in addition to the 2 new Early Childhood rooms that are now occupied by our Prep and Grade 1 students. Thank you to the School Association that has generously supported the provision of furniture for these new teaching areas. The painting of all external surfaces and new blinds in the 9/10 rooms and Art Room will give the whole school a much needed face-lift!



Another aspect of our site redevelopment is the enclosure of the school pool – this is scheduled to commence on the 15th November. The implication of this is that the pool will need to be closed for the 2010/11 vacation period. Heavy machinery will need to be used for the project and unfortunately the weather has determined access to the adjacent ovals. I know the long term benefits of the enclosure of this valuable resource will be in the best interests of the community.

KEYS 2 DRIVE – this information is provided on behalf of the Australian Government’s road safety initiative. It’s fairly well known that young people are seriously over-represented in road safety statistics. But a much lesser known fact is that Learner drivers are actually the safest drivers on the road. It’s only when a novice driver “goes solo” that their crash risk sky rockets so much so that they are 20 – 30 times more likely to be involved in a fatal or serious crash in the first 6 months on their P’s. To tackle this issue, **keys2drive**, the single largest national Learner driver safety programme ever undertaken in Australia has commenced. **Keys2drive** will see 200,000 lessons provided by accredited driving instructors for FREE. If you already have your L’s or are planning to get them in the next 12 months, or if you are or will be supervising a Learner driver, you can find out more information and register for a FREE **keys2drive** lesson at www.keys2drive.com.au

I encourage all members of the school community to access our school website to ensure they are fully informed as to the timing of many events that have been scheduled for the term.

www.schools.education.tas.gov.au/stmarys

Regards,

Brian Shepherd

Voice Research Workshop

On Monday the 9th August, Cassie M^cGiveron, Bradley Mitchell and Elizabeth Carin travelled to Newstead College in Launceston to participate in the 'Voice Research Workshop'. When we arrived at Newstead we stood around for a while wondering where we were meant to be going; until eventually other students from foreign schools strutted along looking dignified; and importantly like they knew where they were going, so we followed. They lead us to a room, a large room, filled with chairs and tables. So we sat down.

An important looking lady announced that we should eat some morning tea (white chocolate and raspberry muffins washed down with a refreshing glass of juice, your choice of apple or orange) while we waited for students flying over from flinders island, as well as ones driving from Cressy. We then talked about the purpose of the day; coming up with a research question to apply upon the school and community. We then got given a jelly bean, and had to find all other students with the same coloured jelly beans as ours. These would be our teams. I was the only person with a pink jelly bean. I united with the orange people. We then discussed issues such as the transition between high school and college, highlighting the many factors the effect the choice of which college to attend.

We were then assigned questions to ask various Newstead students during lunch; such as why they choose Newstead over Launceston College. Subsequently we were given vouchers for lunch and told to go visit the canteen. We interrogated random students and ate various food matters.

After lunch we regrouped and talked about things such as refining research questions, different ways of collecting data, and the most effective ways to accumulate information. School groups then sat together and conversed about potential research questions. The day ended quickly and we then made a trip to Kings Meadows for some grocery shopping and a prompt trip to MacDonalds.

The plan over the next few months is to conduct surveys, interviews etc. which relate to our question, then to return to Newstead College at the end of November to present our results.

Thank you to Sally Johnson for driving all the way there with us, and helping us during the day.

- Elizabeth Carin





SCIENCE FAIR



On Wednesday
we went to the
Science fair in the
Hool. In my group there
was Leo and Catherine
and they liked the
soo Btt. and one of
the fig?? I up??
and drew the spider
Bonne.

Bribe
on Wednesday we
went to the he Lnd
to see the Science fair.
Kate and I were in my
group. We did the
Ethiop. It was so good it
did silk to the
hubs and the
frogs did jump
out of
the bowl.

Kate
on Wednesday
I went to the
Science fair in
the hall. We stayed in
groups. I was
with Leo and
Bribe. We
liked the Z line. It
was so good. I was
like the boy
who was the
frog did jump
out.



EC & FV Auskick Presentation Day

Sunday 8th August saw the final game for the year with the children versus the parents followed by a BBQ and Presentations. Throughout the season we had 76 children registered coming from Avoca, Fingal, St Marys, Bicheno, Colesbay and Scamander. An excellent day was had when we travelled to play St Helens Auskick and also St Helens travelling to St Marys the following weekend. A very big Thank you to the Committee and Parents for your assistance and also to the children for playing with great enthusiasm and excellent attitude.

Thanks also to
Fingal Football Club
St Marys Football Club
St Helens Auskick
Break O Day Council

Registration Day for 2011 is 17 April
Hope to see lots of players and parents there
Richard Gee -President East Coast and Fingal
Valley Junior Football Association

Tasmanian Lymphoedema Centre Inc. Logo Competition



PO Box 226
ST MARYS, TAS. 7215
Ph: 03 63722800

This year the Tasmanian Lymphoedema Centre at St Marys is celebrating its 10th Anniversary. It is the only clinic in Tasmania that offers both Laser and Massage in the treatment of Lymphoedema.

St Marys and St Helens District High Schools were invited to design a new logo and letterhead for the Tasmanian Lymphoedema Centre. Eight Students from St Marys Entered the competition and the 1st Prize with a cheque for \$150.00 went to Kirilly Barbagallo and Highly Commended with a cheque for \$50.00 went to Nina Ling. The Art Department also received a cheque for \$100.00.

Thank you to the Lymphoedema Centre for their generous donations to our students and school.



Kirilly Barbagallo



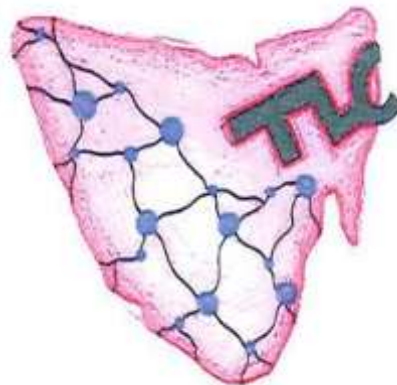
Nina Ling



Sherelle Bowron



Avalon Chippindale



Maya Ling



Melissa Shilling



Sharney Earley



Elizabeth Carin

Jill Lewis
(Art Teacher)



On the 24th of August 2010 a group of the 9/10 drama and music students set off on the annual Arts on Tour trip. The first stop was Bicheno Primary, this was our second performance after we performed for St. Helens, Fingal and St. Marys students at St. Marys the week before. We were all very eager for the performance. After getting a good response from the crowd, we packed up and set off to Swansea. This was a small crowd but they were very enthusiastic. This is where we left from the Rock Challenge crew who had to go back to Launceston to perform in the finals. The rest of us headed down to Dodges Ferry, where we were staying for 2 nights.

Well rested and raring to go, we left Dodges Ferry and headed to Campbell Street Primary. This is where we met up with the Rock Challenge crew again. The hall was packed and the crowd was fantastic, asking for an extra song at the end of the performance and wishing us back next year. After packing up very swiftly we had a whole 5 minutes to get to Glenorchy Primary School and set up. This was the school where we saw Mrs Miles and had a catch up. After another great performance and a response we got changed, packed up and set off to Eastlands Shopping Centre for some serious shopping. After grabbing something to eat and deciding not to go to the movies we headed back to Dodges Ferry. We had an in house movie and some games then it **was off to bed. Well..... for some.**

Rise and shine, it was the last day of tour. We packed up our rooms and did some cleaning then headed down to Dodges Ferry Primary School. This was an excellent performance and a great way to finish the tour. We then made a long trip back to St. Marys where we had a night performance in front of all our friends and family. We would like to thank Miss Hickey and Emmo for taking us on tour. We had great fun and learnt a lot. Thanks guys.

By Maddison Gale, Tarquinne Bannister,
Grace Ennis and Ricki Brown

ROCK CHALLENGE

Late in Term 2 a last minute Rock Challenge band consisting of Jacob Spilsbury, Bradley Mitchell, Finn Buchhorn, Emily Quin and Christin Heron, were thrown together to compete in the Rock Challenge 2010 in Launceston on Monday 23rd August. With the time we had we could only write one original song and learn one cover while other bands played two originals. The band had two weeks to learn their songs which was a huge disadvantage as the other bands had all year.

Our band 'Alice Automatic' played third on Monday night and it was quite a solid performance. After playing the set we left the stage and then moved our focus onto the next day which would be our first day of the Arts On Tour travelling down south. We thought we would have no chance of making the final and were highly surprised when it came time for the results to be announced - "and in second place from St Marys.... Alice Automatic!!!"

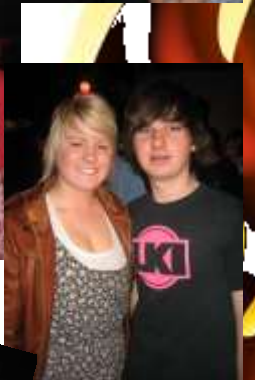
At the final, held the following night in Launceston, we were worried about not having enough songs with every other band performing three songs each. We played our two songs and still went extremely well.

Thank you to everyone that came and supported us both nights, thanks to Mr Emmerton and Mr Wardlaw for helping the band get our act together and also to Mr Shephard and Mr LeFevre (our biggest groupies) for organising/supervising the buses to and from the venue.

Last, but not least, a big congratulations to our winning band from last year 'New Generation' who came equal second in the College section of the Rock Challenge (for Newstead) with Nic Symons getting the award for the Best Individual Performer.

By Bradley Mitchell and Jacob Spilsbury.

2010





The Great Muffin Off!

Last term Grade 9/10 students, from Home Ec and Hospitality, took on the challenge to produce the best muffins ever tasted!

With cooking credibility on the line, Mrs Forsyth and Mr Wardlaw provided Students with over 20 different recipes to choose to bake from.

Mr Le Fevre was most disappointed no-one opted for the Sardine Muffin recipe, as he is quite partial to those. Luckily he was not at school during the judging as there would have been very little left to judge or sell.

Completed muffins were displayed in the hall at lunch time and the judging panel of staff members quickly grew from 3 to 8!

Many muffins were sold with the champion muffins fetching high prices.

All money raised was donated back to the Home Ec Dept.

Mr Shepherd commented that they were, "Some of the best muffins he'd laid eyes on for some time."

Grand Champion Muffin was made by Stacey Thomas (Mrs Forsyth), Indi Douglas (Mr Wardlaw) made the Best Tasting Muffin and Ebony bean (Mr Wardlaw) the Best Presented. Out of 15 entries, 8 were highly commended and could easily have won with only a few judging points between them!

Special thanks to Roseanne for all the extra work she did to make The Great Muffin Off a success.

SCIENCE & ENGINEERING STATE SUPER CHALLENGE



Once again, very early on Friday the 13th August- YES...the STUDENT FREE DAY – twenty five brainy and very dedicated grade 9/10 science students went to Launceston to participate in the State Super Challenge, with the aim of winning a trip to NSW!!. It was another chilly morning and at least this time we were prepared, with extra layers of clothing, for the Elphin Sports Centre.



It was a similar setup to the first event except for a few new challenges; ‘Mission To Mars’ – Build a vehicle that is able to traverse an undulating surface, ‘World Sailing Spectacular’ – Build a boat including sails and rigging, ‘Flight of the Navigator’ – Construct a Styrofoam plane, ‘Heli Rescue’ – Build a fixed arm helicopter and complete a number of rescue activities.



At half time it was announced that St Marys was coming in 4th place and that Riverside and Launceston Christian School, Burnie Marist and Mt Carmel College teams were in front of us by only a few points.



Gary, Josh, Jacob and Bradley were working hard on trying to build a quick sailing boat and were feeling the pressure, the Heli Rescue Team of Matthew, Lance, Bree and Stacey came in second place whilst Mollie, Jasmine, Elka, Tarquinne and Kiani felt the very competitive nature from some of the schools, in particular Calvin Christian school in the Future Power activity. It would again come down to our Bridge Building team. Shantelle, Annalyse, Jack and April used a similar design to the first bridge (aka Wilbert) and were able to make the second lightest bridge of 50g but unfortunately Wilbert 1.5 didn't survive ‘Bob's Bridge Buster’.

It was a really long but enjoyable day and many of us had developed a rather large headache from Calvin Schools vuvuzela horns.....We look forward to participating again next year and hopefully we make the SUPER State challenge again. Thanks to Mr Brad Ennis and Mrs Mel Morgan for the yummy lollies and encouraging us to participate in the day.





The Little Red Hen

Late in term 2 the primary school presented their first production in many years "The Little Red Hen". It was an exciting time for all the students and staff involved who all worked very hard to make it happen.

Mr Emmerton (who is awesome, by the way) had a hard time deciding who would fill the main role as the little red hen but it was Erinn Spilsbury who took on the task and did so with much enthusiasm and character. Well done Erinn!!!

There also needed to be two brave narrators to guide the story line throughout the play and these were, Chloe McCann and Tyson Haas, well done. Max Morris was to be a narrator but due to his soccer skill he was needed elsewhere on the day.

All classes should be congratulated for a wonderful event and the parents and friends were thrilled to see all involved. Mrs Bennett's Kinder class were very cool cats, Mrs Gee's Preps were naughty little pigs and Mrs Fyle's class were silky little ducks. All the rest of the primary made up the awesome choir with help also on the day from Mr Wardlaw and some great parents. Thanks to all who made it a great fun show.

Mr Emmerton Music Teacher





Blind Courage

BY PREP - Mrs Gee

Lorin was blind. He rode his bike up a hill. He went camping. He played the guitar. He needs a magnifying glass to help him read.

Lani

Lorin was feeling sad because people at school were mean.

Amali

Lorin was born blind at the back of the eye. Glasses did not work. He has a cane to help him and a talking phone. Some bullies tease him. He drove from Brisbane to Tasmania.

Kate

Lorin can not see. He can play the guitar. The bullies were mean to him. Mathison and Yazmin went up and played rock and roll.

Tasharna

Lorin 's dad said he could ride his bike over the mountains to the beach. He was 16. I got to put on the glasses. I couldn't see.

Mathison

Lorin and his dad went for a ride and they rode to the beach and they rode up hills for 275km. They had a sandwich and they kept going and his dad felt proud and he couldn 't see

the trucks he just had to listen.

Bonnie

Lorin was born blind. He can play a guitar. He rode his bike over the mountain and they went to the beach. He was born blind and he is amazing. He is blind and he plays cricket. He has a cane. He made it to the beach. I liked him. He has been to 1000 schools to talk. When he went to school people were bullying him. He was sad because he was blind.

Bridie

Lorin plays guitar blind and Lorin raised money and he rode a two-seater bike. He rode over 34 hills to the beach. The bullies pushed him around. Lorin couldn 't see his kids smile.

Leo

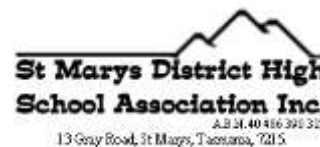
Lorin and his dad went on a bike ride but they stopped and had a sandwich then they kept going. His legs got tired. He was 275 km to the beach. He played Shrek on the guitar.

Ruby

The man was blind and he rode over the mountains and he was sad because he couldn 't see his kids.

Yazmin

St Marys School Association News



On behalf of the School Association committee, I would like to thank all entries to our competition on the proposed new identity for the school. This competition was an attempt to promote awareness of proposed federation with Fingal School, stimulate debate and ideas around the concept of an identity change, and to inform all members of the community of the potential changes to the school's corporate identity.

There were a broad range of ideas submitted, too many for us to reply to in person. All submissions, including those advocating a no change position will receive due consideration.

We are aware that many people feel a strong sense of pride and history in the school, and that is a great strength in our community. We would hope that any changes made will reflect both current sentiments and future needs of students.

It is our primary aim as a committee to support the educational needs of all children attending our school, and we strongly feel that the federation with Fingal has many advantages for all. Our discussions as to the final form of that federation are ongoing and we intend to keep the community fully informed as to the progress on the discussions.

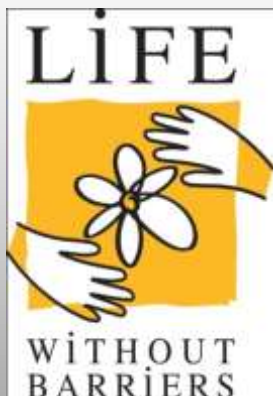
On Saturday 13th November we will be catering for the mine rescue championships at Cornwall Coal. If you are able to assist with preparations the day before, or help cook an early breakfast or serve lunch on the day that would be appreciated. Please let one of our members know you can help – this will be a great fundraising opportunity for us.

If you would like to attend our next meeting it will be on the 5th October, 7pm in the staff room. All welcome.

Tanya Greenwood
President
St Marys School Association

This service operates within the auspices and support of the Department of Education in support of families and schools.

The School and Family Disability Liaison Service is ready to start supporting families and schools throughout Tasmania.



What is this service?

- ◇ A liaison service aimed at supporting families and schools to resolve issues concerning students with a disability
- ◇ Our officer will provide personal service, visiting families and schools as required

Who can access this service?

- ◇ Families or caregivers of students with a disability
- ◇ All State Schools

How do we access this service?

- ◇ By contacting Libby Richardson
Phone: 62 367715
Mobile: 0437 592 136
Email: Elizabeth.richardson@lwb.org.au

There's a community for everyone



TAKE HOME AN INTERNATIONAL BIG BROTHER OR BIG SISTER.

Capture the spirit of family and friendship by hosting an international exchange student from Southern Cross Cultural Exchange.

Carefully-selected students arrive in early February 2011 from Europe, the U.S.A., Japan and Canada. Check out our brochure **BRING THE WORLD TO YOUR HOME** on the Southern Cross Cultural Exchange website www.scce.com.au.

If you want to seize this opportunity, contact S.C.C.E. on 1800 500 501 (we may have a representative in your area), fill in the Host Family Application Form (also on our website). Students will attend your local secondary school, are fully insured and have their own spending money. The February students are being matched now!

Robert Lindsay
National Inbound Manager

JUNIOR TENNIS COACHING TERM 3

Term 3 tennis will be late starting and a short term of only 6 weeks. Fees modified accordingly.

Bookings can be made from Sunday 17 October and not before. No one will miss out!

Sessions commence Friday 22 October for St Marys and Monday 25 October for St Helens. Contact Harry from the 17th October on 0409036245



St Helens Sea Scouts & Cubs

CUBS
7 ½ - 11 year old girls & boys

Starting Soon!
Limited spaces

All enquiries to Jane on 0412 803 027

St Helens Child and Family Centre for Department of Education



FLOOR PLAN

The first five years of a child's life are very important. Mums, Dads and Carers need as much support as possible to assist the health and well being of their growing children. Giving very young children a good start will help them to have the best future possible. The building of the Child and Family Centre in St Helens will commence in October 2010 on the St Helens School grounds near the tennis courts. Rules around site selection mean that this site is the only option but we believe the location is a good one, within easy walking distance to shops, childcare and the school. It will offer good parking and a number of services for children 0-5 and their families in the Break'O'Day area including child health and parenting and early education.

The Child and Family Centre in St Helens will:

- Be a welcoming place for all
- Provide local programs for every family with babies and children
- Provide integrated services in the local community
- Meet the changing needs of our community

Interested in further information? Contact:

Joanne Long – 63762226
Mel Thorne – St Marys DHS – 63723900
John Marshall – St Helens DHS – 63 767100
Sue Gofton – 0428 136381

Mon	Tue	Wed	Thu	Fri
			30 Sep	1 Oct
4 Oct	5 Oct <ul style="list-style-type: none"> St Marys School Assoc. Meeting 7pm staffroom Student Banking Poetry W.Shops gr 5-10 	6 Oct <ul style="list-style-type: none"> Chess Competition - School Hall Dental Service 	7 Oct <ul style="list-style-type: none"> Launching into Learning 11am - Kinder room Stepping Stones Dental Service 	8 Oct SHOW DAY HOLIDAY
11 Oct <ul style="list-style-type: none"> Rd 2 - PIPS testing commences 	12 Oct <ul style="list-style-type: none"> Student banking 	13 Oct <ul style="list-style-type: none"> Grade 8 Camp - Coles Bay Immunisations Mr Shepherd's B'Day Dental Service Grade 10 Road Safety Excursion. 	14 Oct <ul style="list-style-type: none"> Grade 8 Camp - Coles Bay Launching into Learning 11am - Kinder room Stepping Stones 1.30pm - Kinder room Dental Service 	15 Oct <ul style="list-style-type: none"> Grade 8 Camp - Coles Bay
18 Oct	19 Oct <ul style="list-style-type: none"> Athletics Carnival - St Marys/Fingal Student Banking 	20 Oct <ul style="list-style-type: none"> SWSP - St Marys/Fingal Dental Service 	21 Oct <ul style="list-style-type: none"> Next Newsletter SWSP - St Marys/Fingal Launching into Learning 11am - Kinder room Stepping Stones 1.30pm - Kinder room Dental Service 	22 Oct <ul style="list-style-type: none"> SWSP - St Marys/Fingal

Above calendar is correct at time of printing
 For regular updates and other information please go to the school website:-

www.schools.education.tas.gov.au/stmarys

LAUNCESTON SHOW SPECIAL



CALOWS COACHES WISH TO ANNOUNCE THAT A COACH WILL BE AVAILABLE FOR **STUDENTS** WHO WISH TO GO TO THE LAUNCESTON SHOW ON FRIDAY 8TH OCTOBER. THE COST OF TICKETS WILL BE **90C EACH WAY.**

THE BUS WILL DEPART FROM ST HELENS AT 8.30AM, SCAMANDER AT 8.45AM AND ST MARYS AT 9.10AM, ARRIVING AT THE SHOW GROUNDS APPROX. 11.00AM.

STUDENTS WILL NEED TO MAKE THEIR OWN WAY TO THE LAUNCESTON TRANSIT CENTRE,
 ON THE CORNER OF ST JOHN AND CIMITIERE STREETS, TO CATCH THE BUS HOME AT **5.00PM.**

BOOKINGS ARE ESSENTIAL TO AVOID DISAPPOINTMENT. PLEASE PHONE TRACEA ON 6372 5166